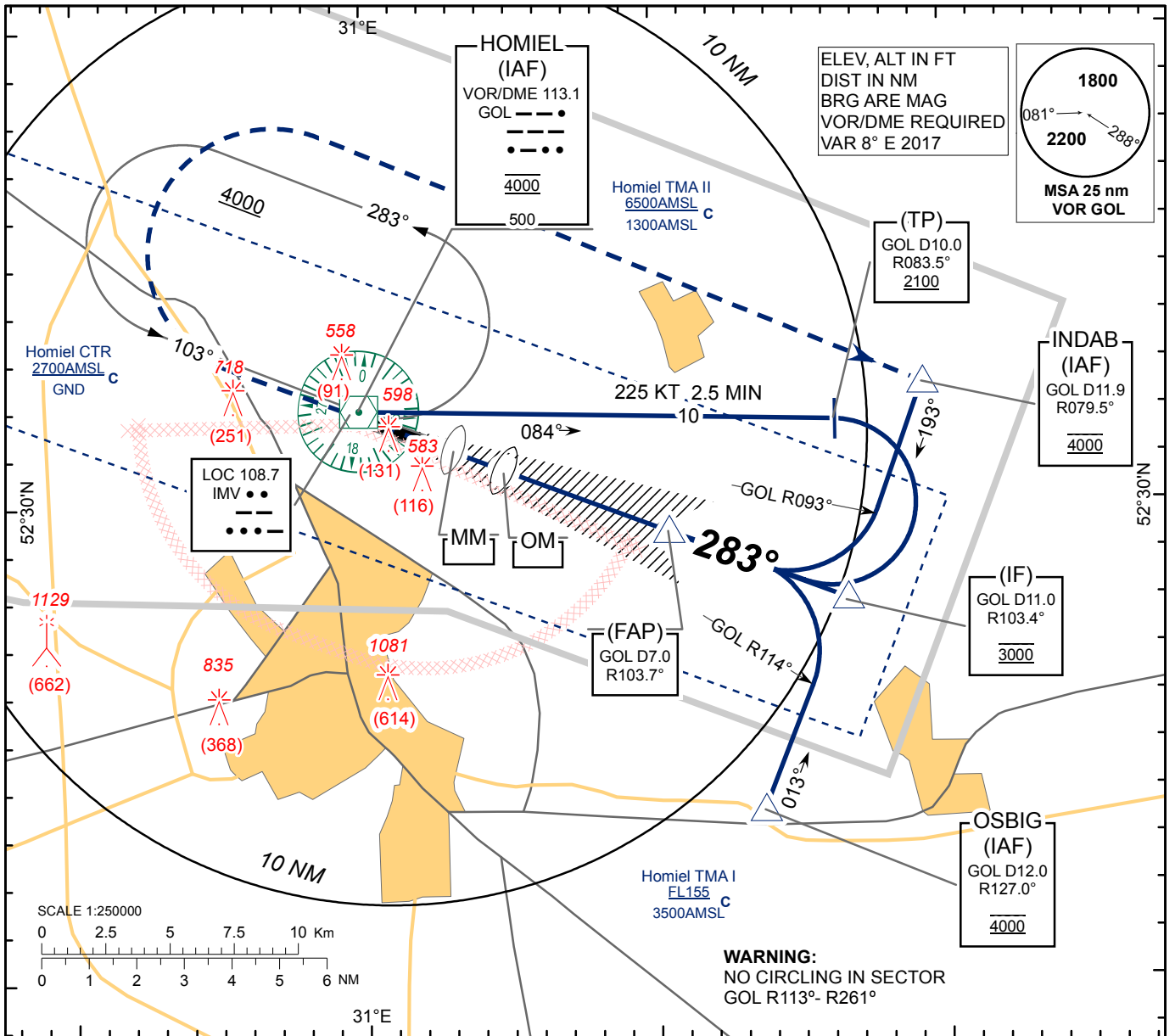


**INSTRUMENT  
APPROACH  
CHART - ICAO**

AERODROME ELEV 471  
HEIGHTS RELATED TO  
THR RWY 28 - ELEV THR 467

APP 126.100  
TWR 118.100  
MET 119.550 (EN)  
124.475 (RUS)

**HOMIEL  
ILS  
RWY 28**



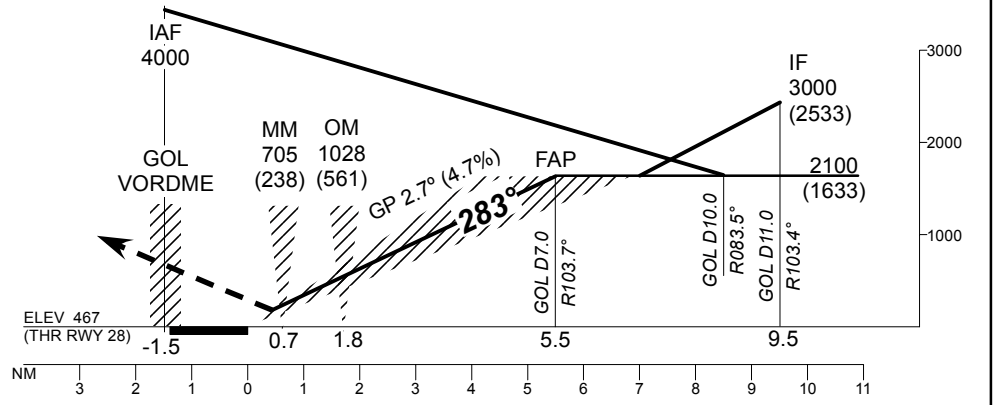
TRANSITION ALTITUDE: 6000

Alt set: hPa (mm on req)  
QNH (QFE on req)

**MISSED APPROACH**

Climb on track 283°  
to 1100 (633) or above,  
turn RIGHT to (IAF) INDAB climbing  
to 2000 (1533) and follow  
ATC instructions.

ILS RDH 54



CHANGE: COOR OM; ADD height over OM; MM.

Aircraft Category		A	B	C	D							
Straight-in Approach OCA(H)	ILS Cat I	629 (162)	641 (174)	649 (182)	659 (192)	GOL	7	6	5	4	3	2
						DIST THR	5.5	4.5	3.5	2.5	1.5	0.5
Circle - to - land		860 (390)	860 (390)	1120 (650)	1120 (650)	HEIGHT	(1633)	(1283)	(1003)	(713)	(433)	(153)
Timing not authorized for defining the MAPt												
GS		Kts	120	140	160	180	200	220				
Desc.Rate(4.7%)		ft/min	570	660	760	850	950	1040				

HOMIEL  
ILS  
RWY 28

**AERONAUTICAL DATA TABULATION**

<b>ILS approach to RWY28 from GOL VOR/DME, INDAB, OSBIG</b>	
<b>Fix/point</b>	<b>Coordinates</b>
(IAF)GOL VOR/DME	523200.6N 0305949.9E
(IAF) INDAB R 079.5° D11.9 GOL	523230N 0311915E
(IAF) OSBIG R 127.0° D12.0 GOL	522333N 0311338E
(FAP) R 103.7° D7.0 GOL	522925N 0311027E
(TP) R 083.5° D10.0 GOL	523144N 0311613E
(IF) R 103.4° D11.0 GOL	522759N 0311635E
IMV LOC	523157.7N 0305932.1E
OM	523044.3N 0310448.2E
MM	523108.7N 0310303.E
THR RWY 28	523122.59N 0310203.83E